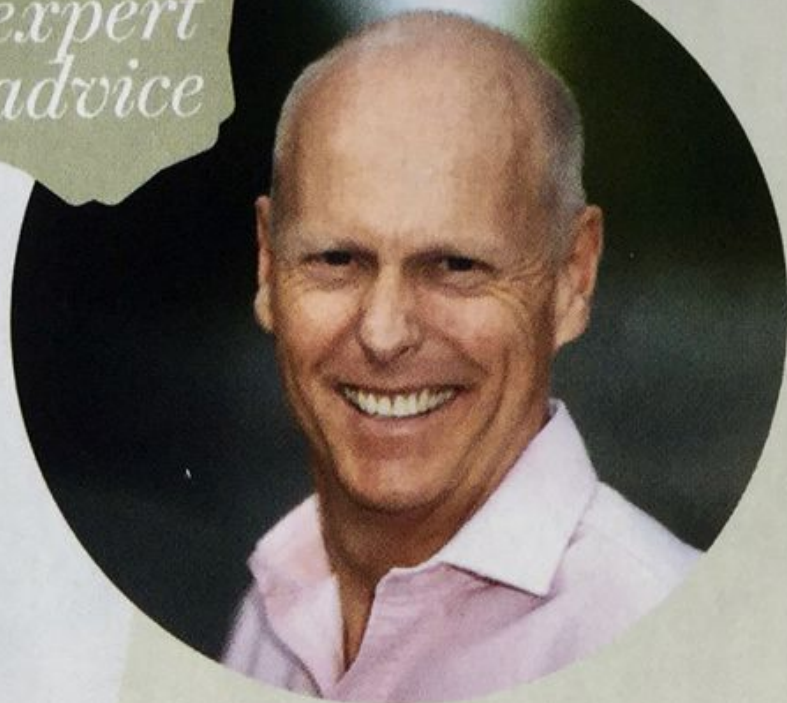


HUGHIE TURNER

*expert
advice*



The decorative painter is famed for his linen paint finish, faux stone and trompe l'œil, so could recreate the paint effects

seen on these pages. Here he tells us what to consider when commissioning a paint effect

1 Paint effects are very versatile and can embellish a room in so many ways – not just on walls. They work wonderfully on cornices, cupboards, doors, fireplaces, panels, shelves, floors and shutters.

2 I always think that a paint finish should whisper not shout (unless it is a lacquer) in order to enhance a room or hallway.

3 Wood graining finishes are increasingly useful today, because real old wood is expensive and hard to find.

4 It is nice when finishes are architecturally accurate, but sometimes they can add a welcome twist and a bit of humour to a room.

5 Modern interiors do not typically lend themselves to paint effects, but some can look fantastic, such as deep lacquer, linen or certain iridescent finishes. *hughieturner.com*